



Lower Thames Crossing

7.9 Transport Assessment

Appendix D Scale of Impacts

Maps

(Tacked changes version)

APFP Regulation 5(2)(q)

Infrastructure Planning (Applications:
Prescribed Forms and Procedure)
Regulations 2009

Volume 7

DATE: November 2023
DEADLINE: 7

Deleted: October 2022

Planning Inspectorate Scheme Ref: TR010032
Application Document Ref: TR010032/APP/7.9

VERSION: 2.0

Deleted: 1

Revision History

<u>Version</u>	<u>Date</u>	<u>Submitted at</u>
1.0	31 October 2022	DCO Application
2.0	17 November 2023	Deadline 7

Lower Thames Crossing

7.9 Transport Assessment

Appendix D Scale of Impacts Maps (Tacked changes version)

List of plates

Page number

Plate 1.1 High growth scenario adverse AM peak north	1
Plate 1.2 High growth scenario adverse AM peak south	2
Plate 1.3 Low growth scenario adverse AM peak north	3
Plate 1.4 Low growth scenario adverse AM peak south	4
Plate 1.5 High growth scenario beneficial AM peak north	5
Plate 1.6 High growth scenario beneficial AM peak south	6
Plate 1.7 Low growth scenario beneficial AM peak north	7
Plate 1.8 Low growth scenario beneficial AM peak south	8
Plate 1.9 High growth scenario adverse inter peak north	9
Plate 1.10 High growth scenario adverse inter peak south	10
Plate 1.11 Low growth scenario adverse inter peak north	11
Plate 1.12 Low growth scenario adverse inter peak south	12
Plate 1.13 High growth scenario beneficial inter peak north	13
Plate 1.14 High growth scenario beneficial inter peak south	14
Plate 1.15 Low growth scenario beneficial inter peak north	15
Plate 1.16 Low growth scenario beneficial inter peak south	16
Plate 1.17 High growth scenario adverse PM peak north	17
Plate 1.18 High growth scenario adverse PM peak south	18
Plate 1.19 Low growth scenario adverse PM peak north	19
Plate 1.20 Low growth scenario adverse PM peak south	20
Plate 1.21 High growth scenario beneficial PM peak north	21
Plate 1.22 High growth scenario beneficial PM peak south	22
Plate 1.23 Low growth scenario beneficial PM peak north	23
Plate 1.24 Low growth scenario beneficial PM peak south	24

Deleted: Plate 1.1 High growth scenario adverse AM peak north 1¶
 Plate 1.2 High growth scenario adverse AM peak south 2¶
 Plate 1.3 Low growth scenario adverse AM peak north 3¶
 Plate 1.4 Low growth scenario adverse AM peak south 4¶
 Plate 1.5 High growth scenario beneficial AM peak north 5¶
 Plate 1.6 High growth scenario beneficial AM peak south 6¶
 Plate 1.7 Low growth scenario beneficial AM peak north 7¶
 Plate 1.8 Low growth scenario beneficial AM peak south 8¶
 Plate 1.9 High growth scenario adverse inter peak north 9¶
 Plate 1.10 High growth scenario adverse inter peak south 10¶
 Plate 1.11 Low growth scenario adverse inter peak north 11¶
 Plate 1.12 Low growth scenario adverse inter peak south 12¶
 Plate 1.13 High growth scenario beneficial inter peak north 13¶
 Plate 1.14 High growth scenario beneficial inter peak south 14¶
 Plate 1.15 Low growth scenario beneficial inter peak north 15¶
 Plate 1.16 Low growth scenario beneficial inter peak south 16¶
 Plate 1.17 High growth scenario adverse PM peak north 17¶
 Plate 1.18 High growth scenario adverse PM peak south 18¶
 Plate 1.19 Low growth scenario adverse PM peak north 19¶
 Plate 1.20 Low growth scenario adverse PM peak south 20¶
 Plate 1.21 High growth scenario beneficial PM peak north 21¶
 Plate 1.22 High growth scenario beneficial PM peak south 22¶
 Plate 1.23 Low growth scenario beneficial PM peak north 23¶
 Plate 1.24 Low growth scenario beneficial PM peak south 24¶

1 Scale of Impact Maps

Plate 1.1 High growth scenario adverse AM peak north

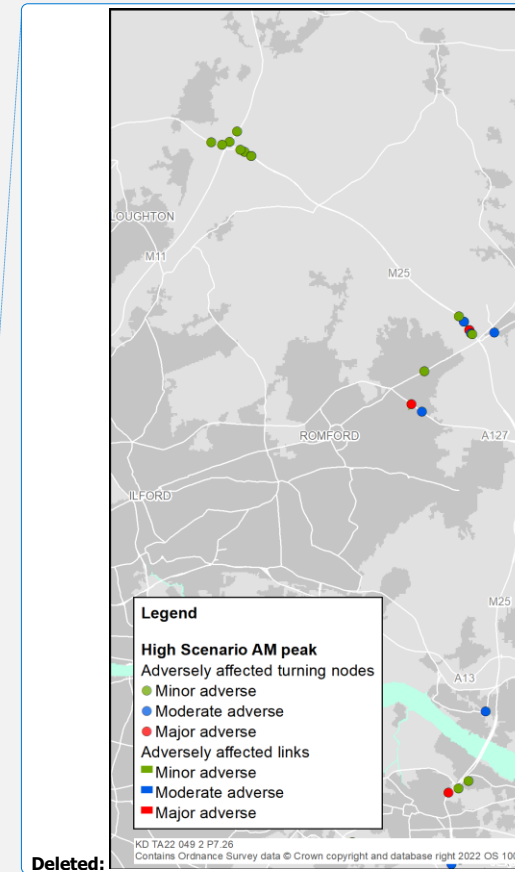
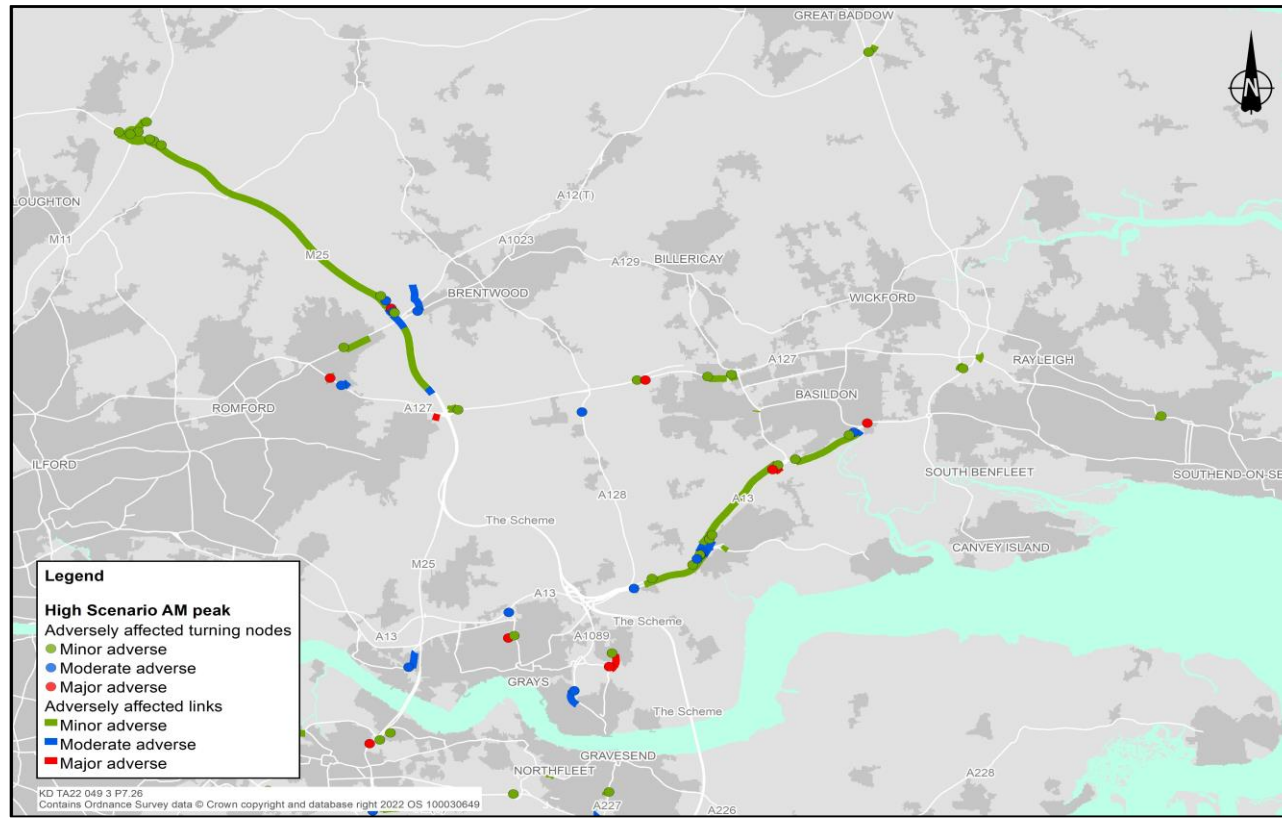


Plate 1.2 High growth scenario adverse AM peak south

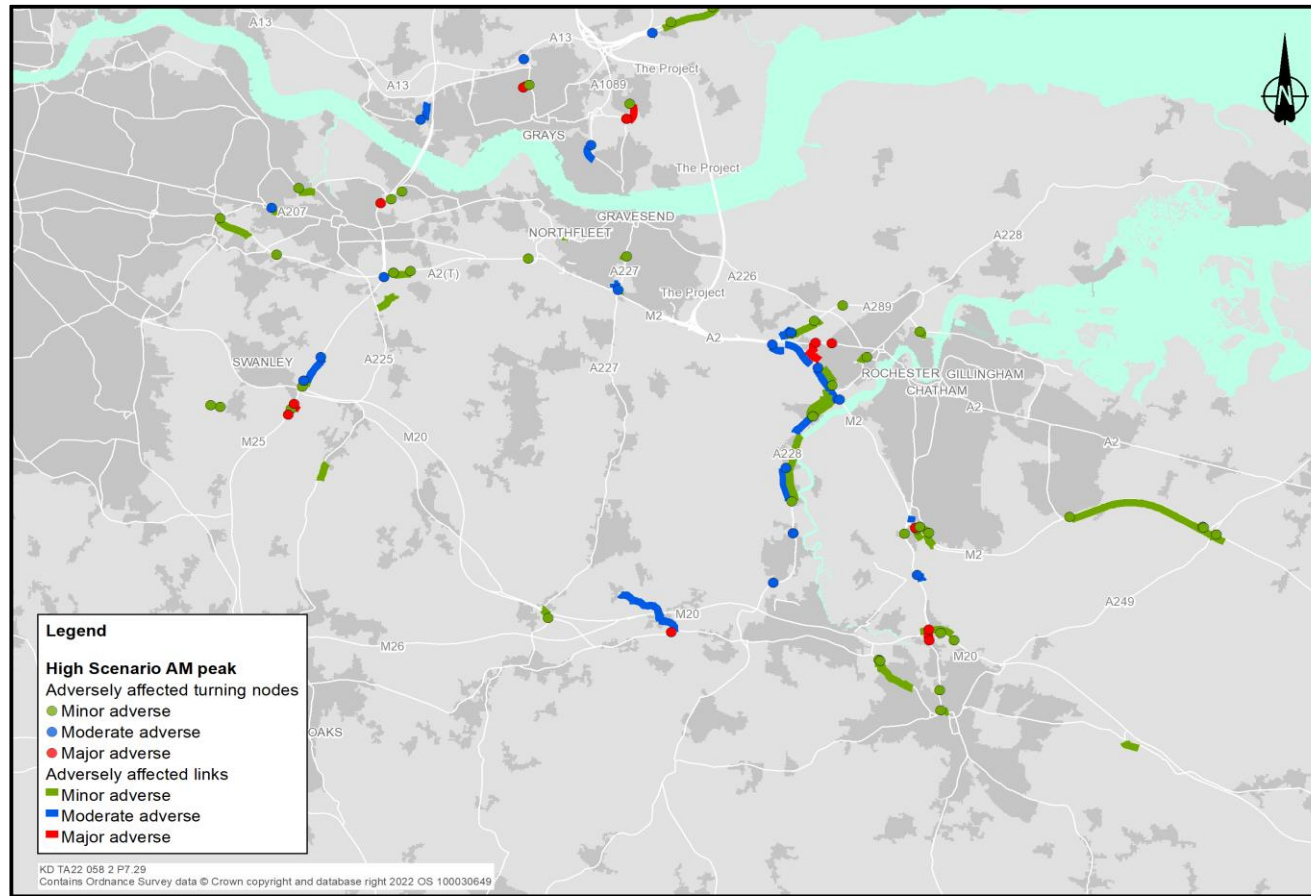


Plate 1.3 Low growth scenario adverse AM peak north

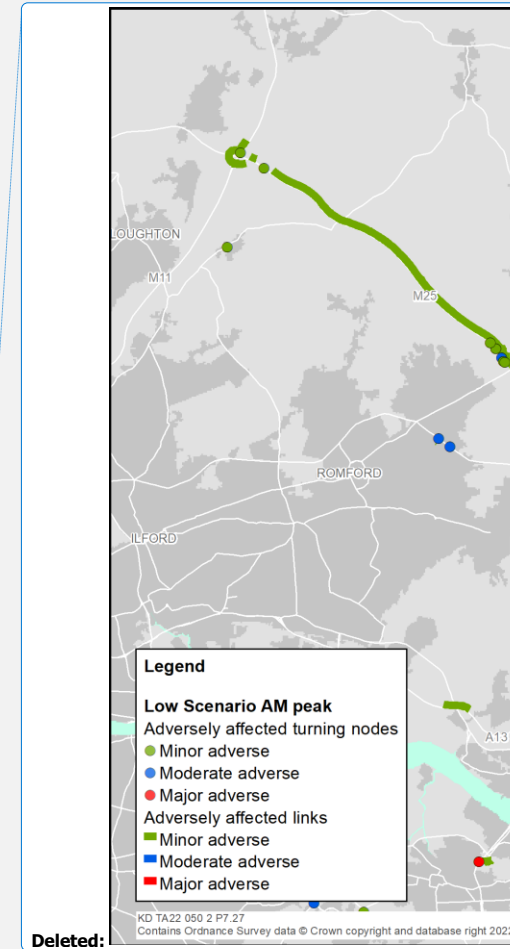


Plate 1.4 Low growth scenario adverse AM peak south

Deleted: ¶

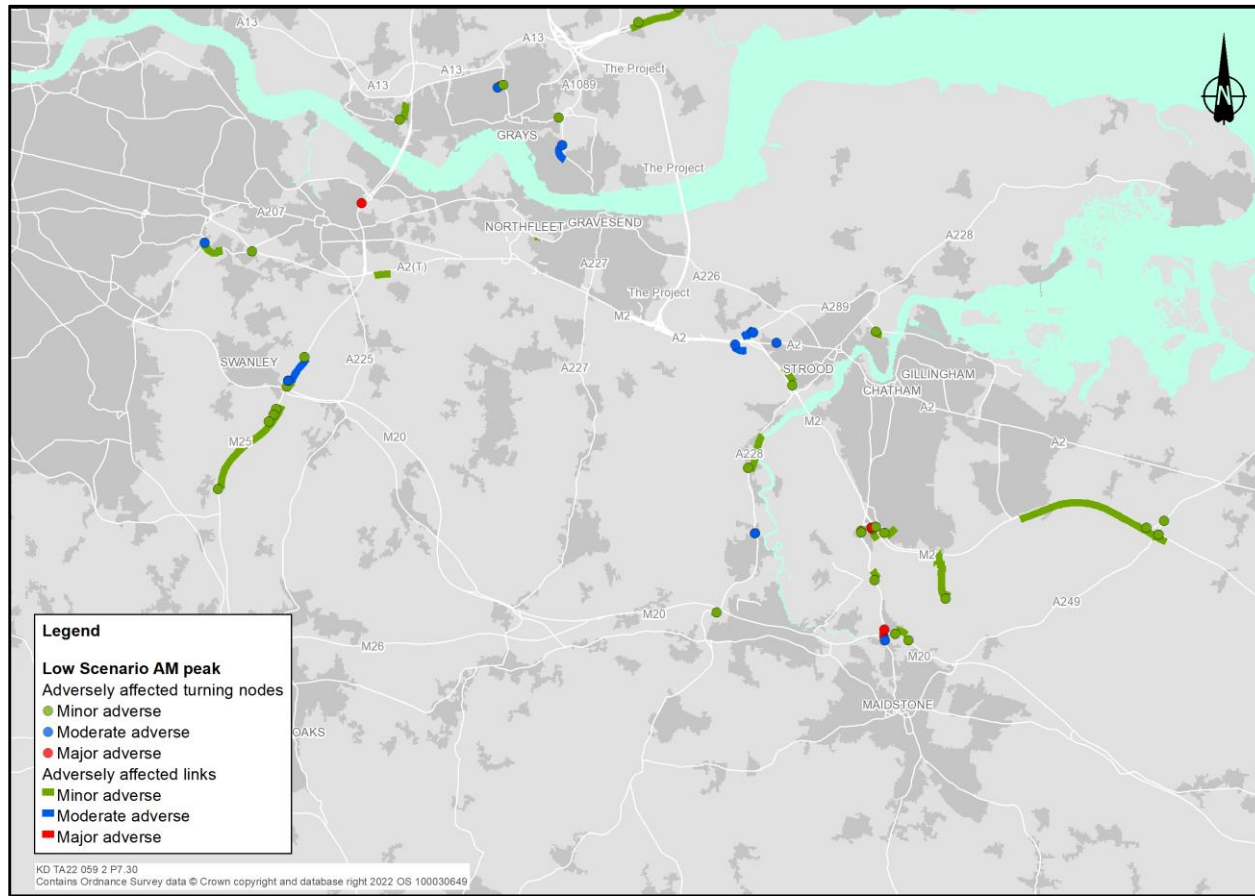


Plate 1.5 High growth scenario beneficial AM peak north

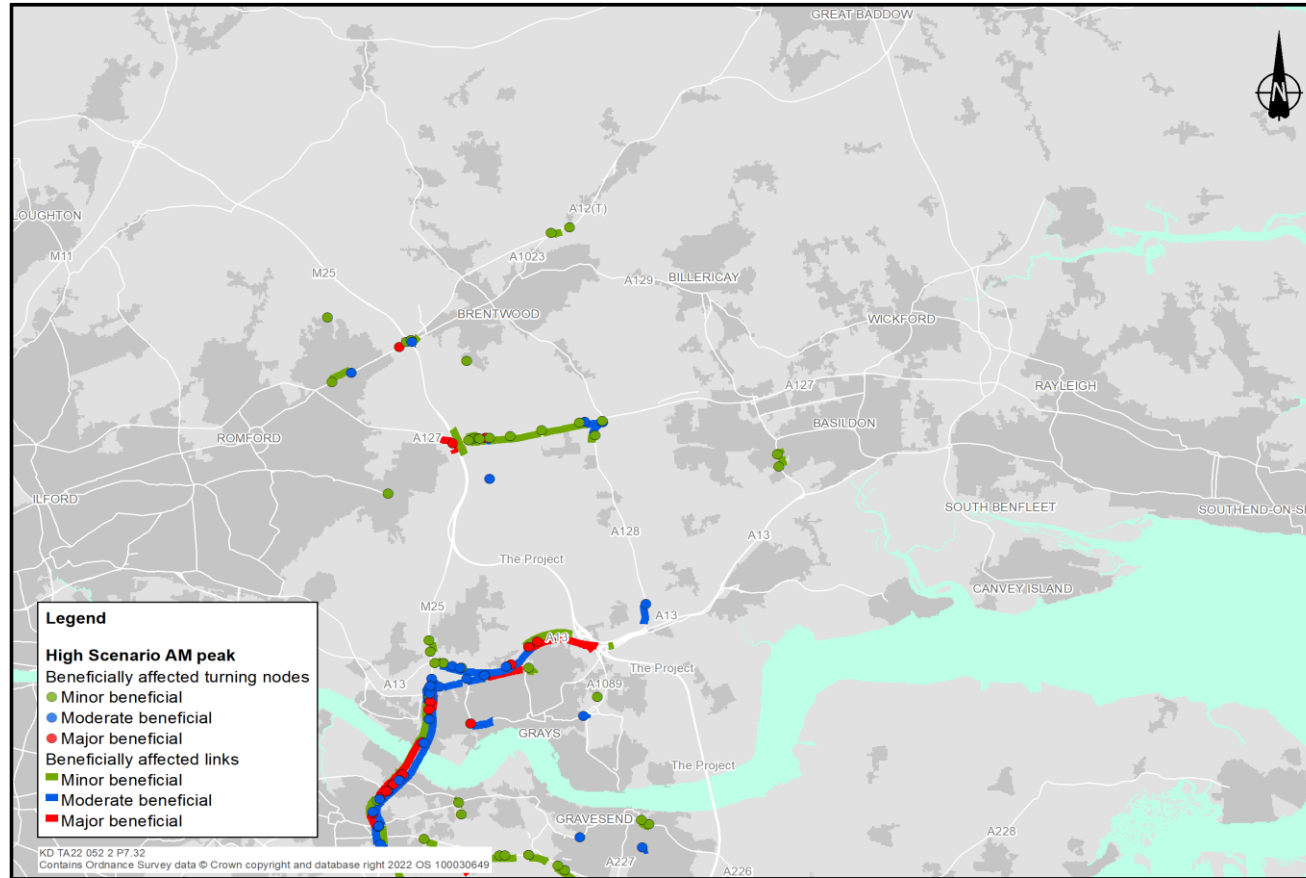


Plate 1.6 High growth scenario beneficial AM peak south

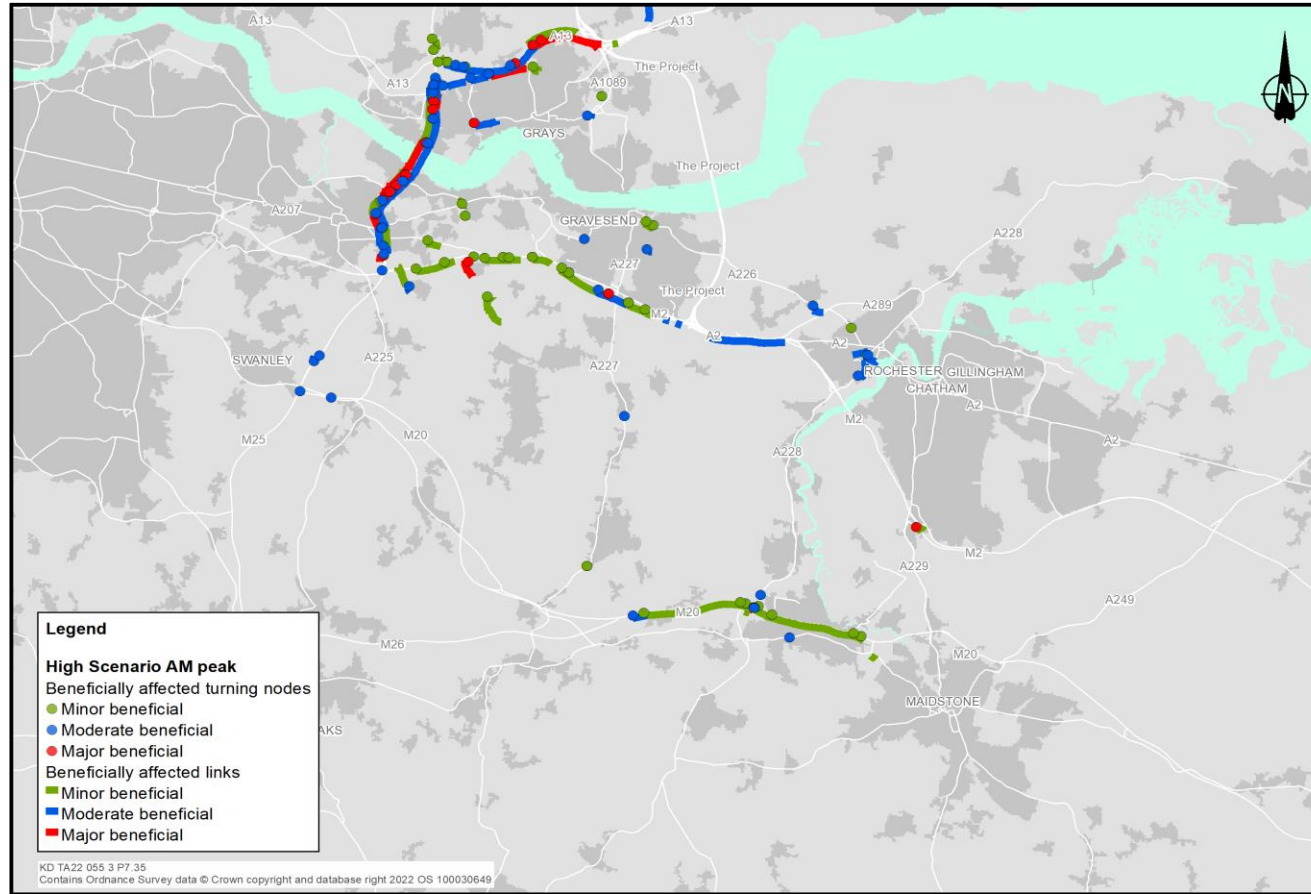


Plate 1.7 Low growth scenario beneficial AM peak north

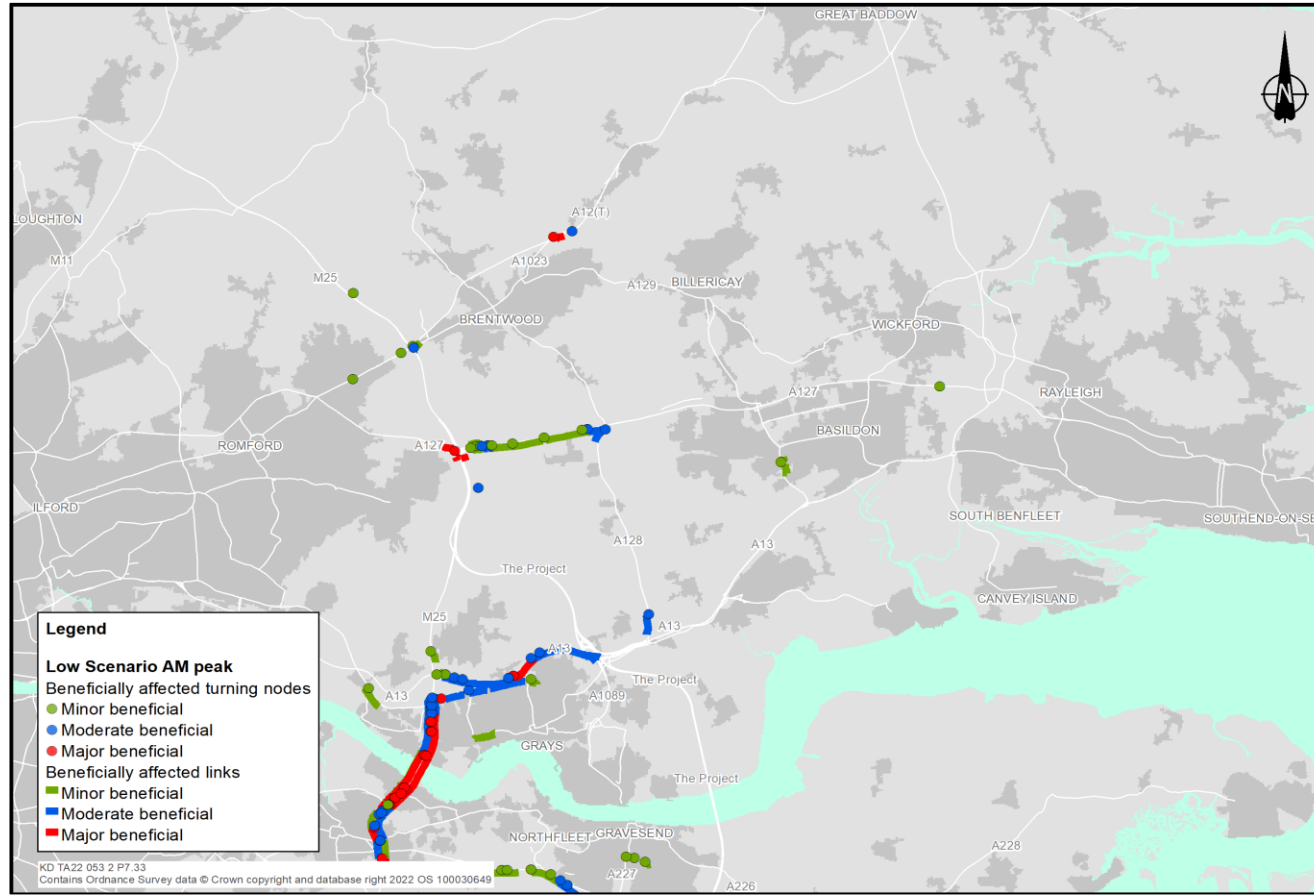


Plate 1.8 Low growth scenario beneficial AM peak south

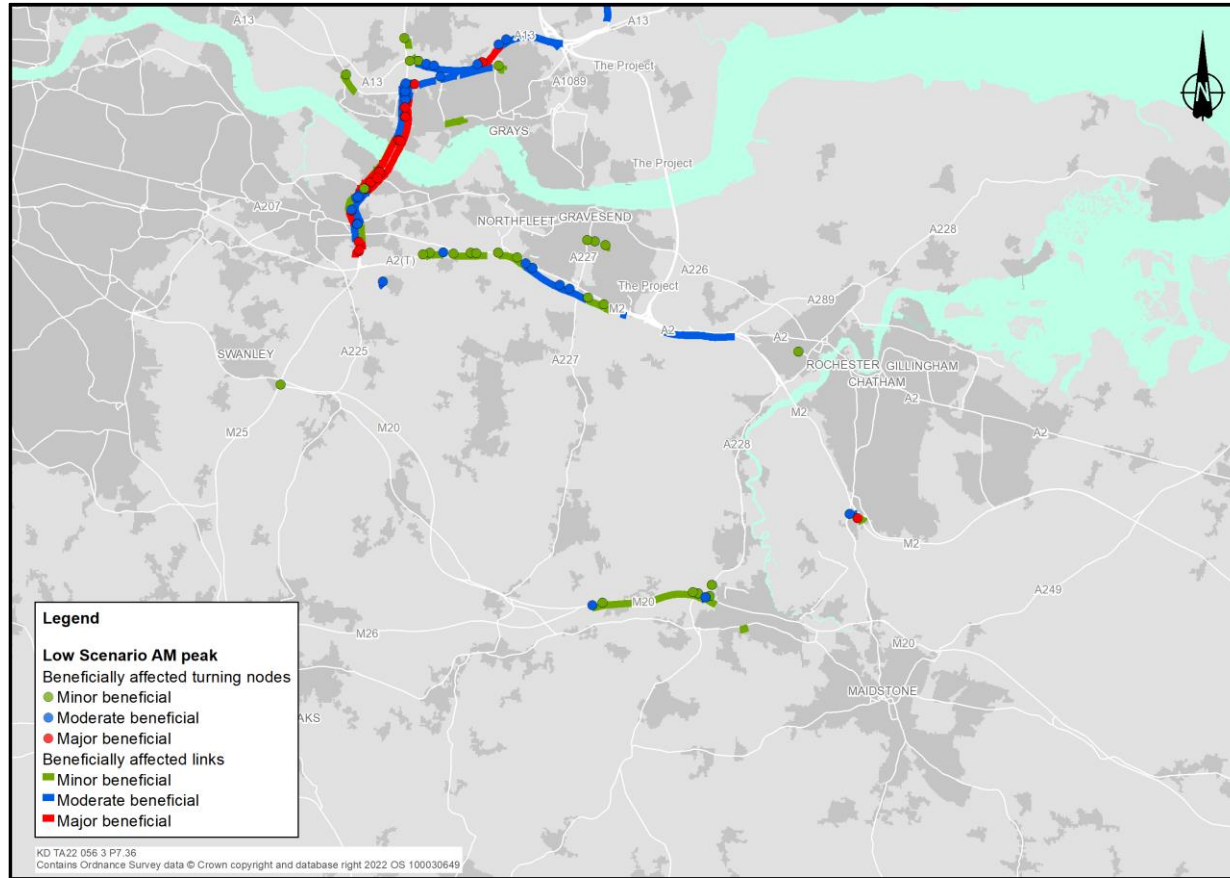


Plate 1.9 High growth scenario adverse inter peak north



Plate 1.10 High growth scenario adverse inter peak south



Plate 1.11 Low growth scenario adverse inter peak north



Plate 1.12 Low growth scenario adverse inter peak south



Plate 1.13 High growth scenario beneficial inter peak north

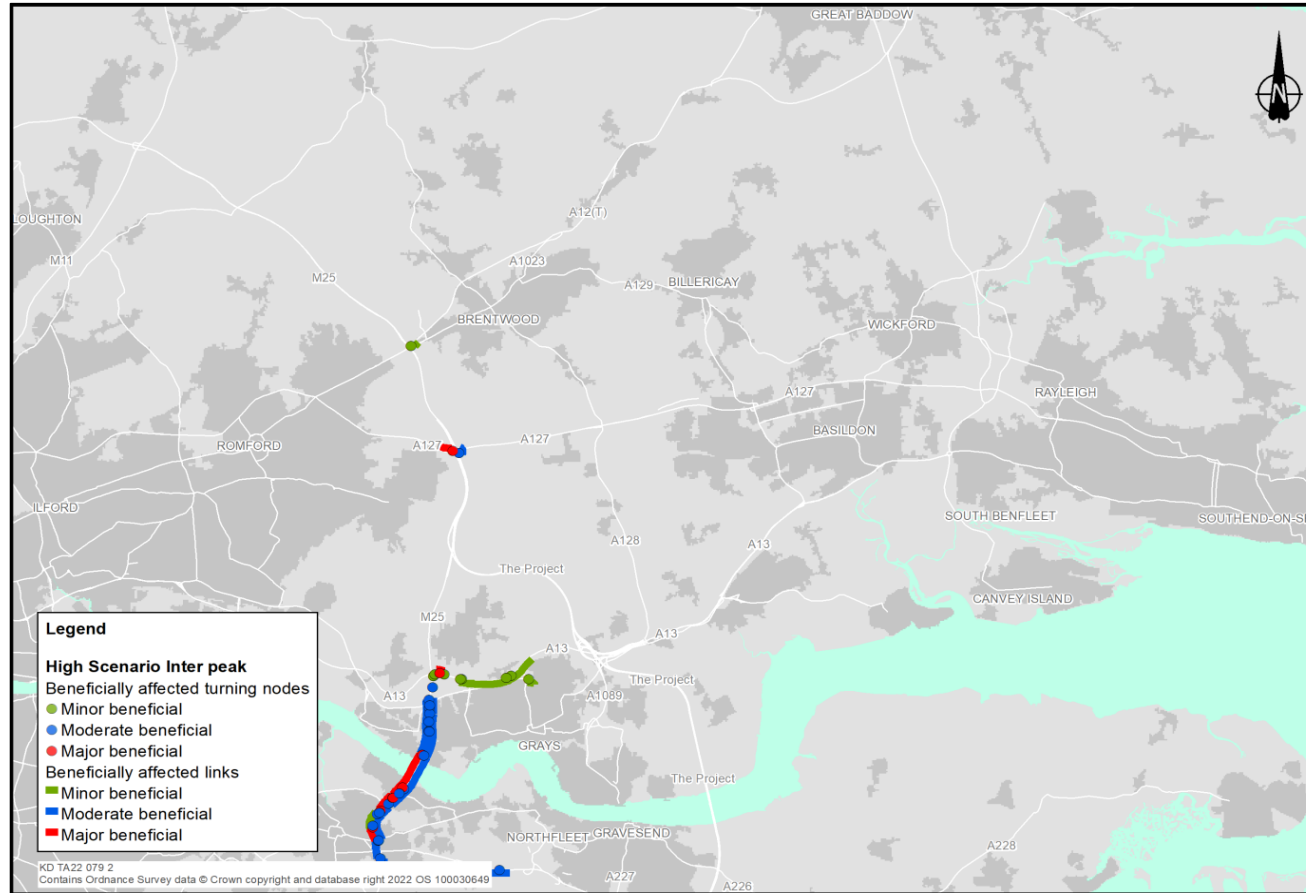


Plate 1.14 High growth scenario beneficial inter peak south

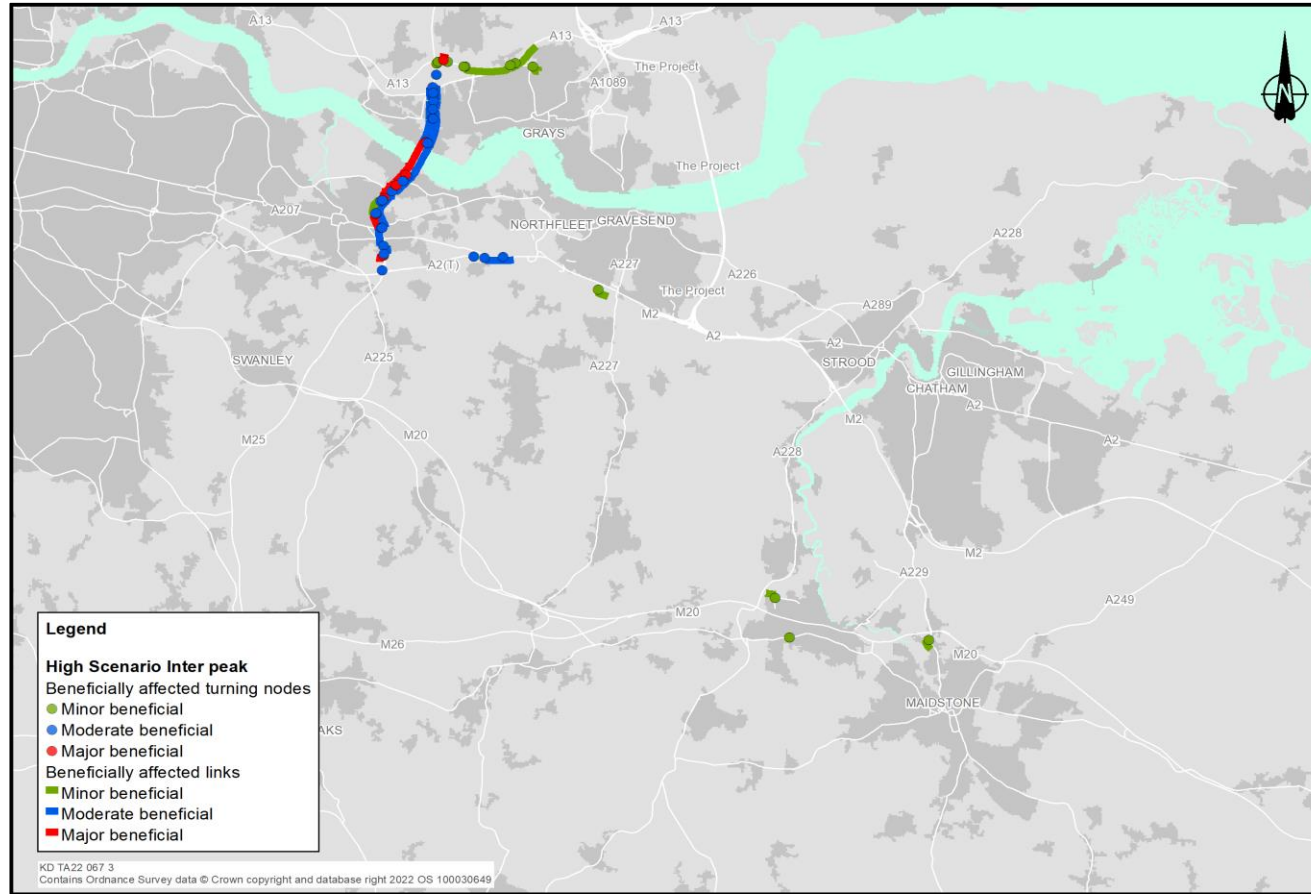


Plate 1.15 Low growth scenario beneficial inter peak north



Deleted:

Plate 1.16 Low growth scenario beneficial inter peak south

Deleted: ¶

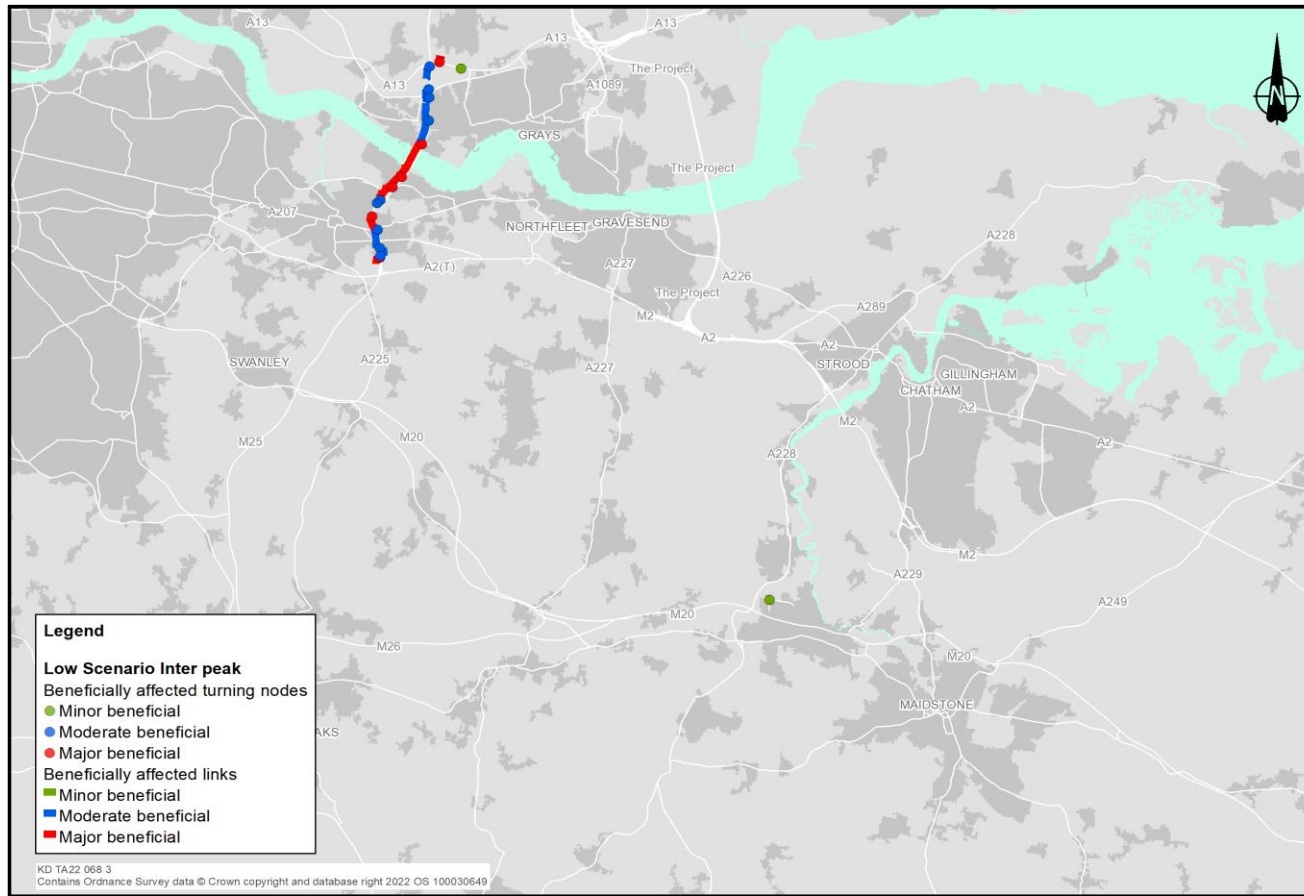


Plate 1.17 High growth scenario adverse PM peak north

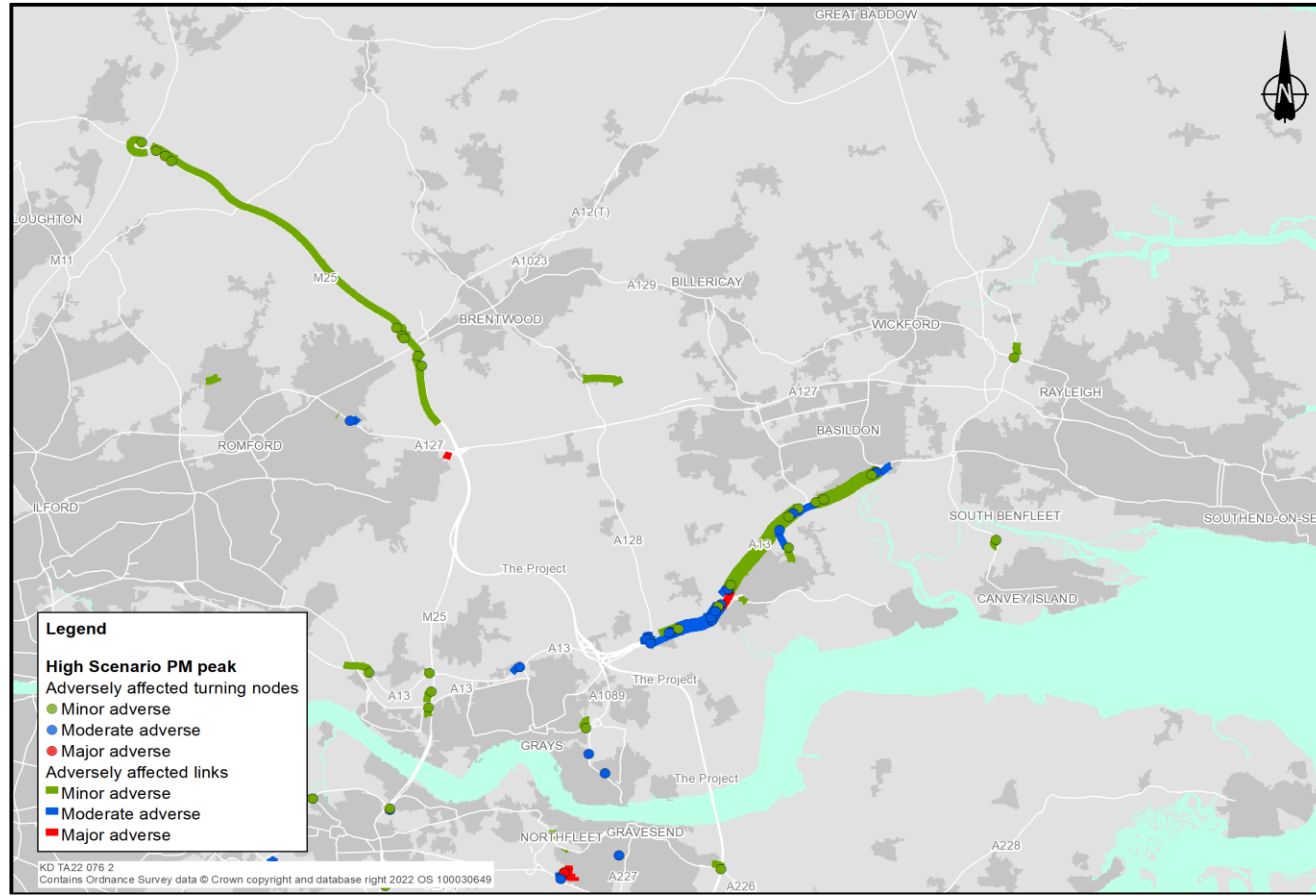


Plate 1.18 High growth scenario adverse PM peak south

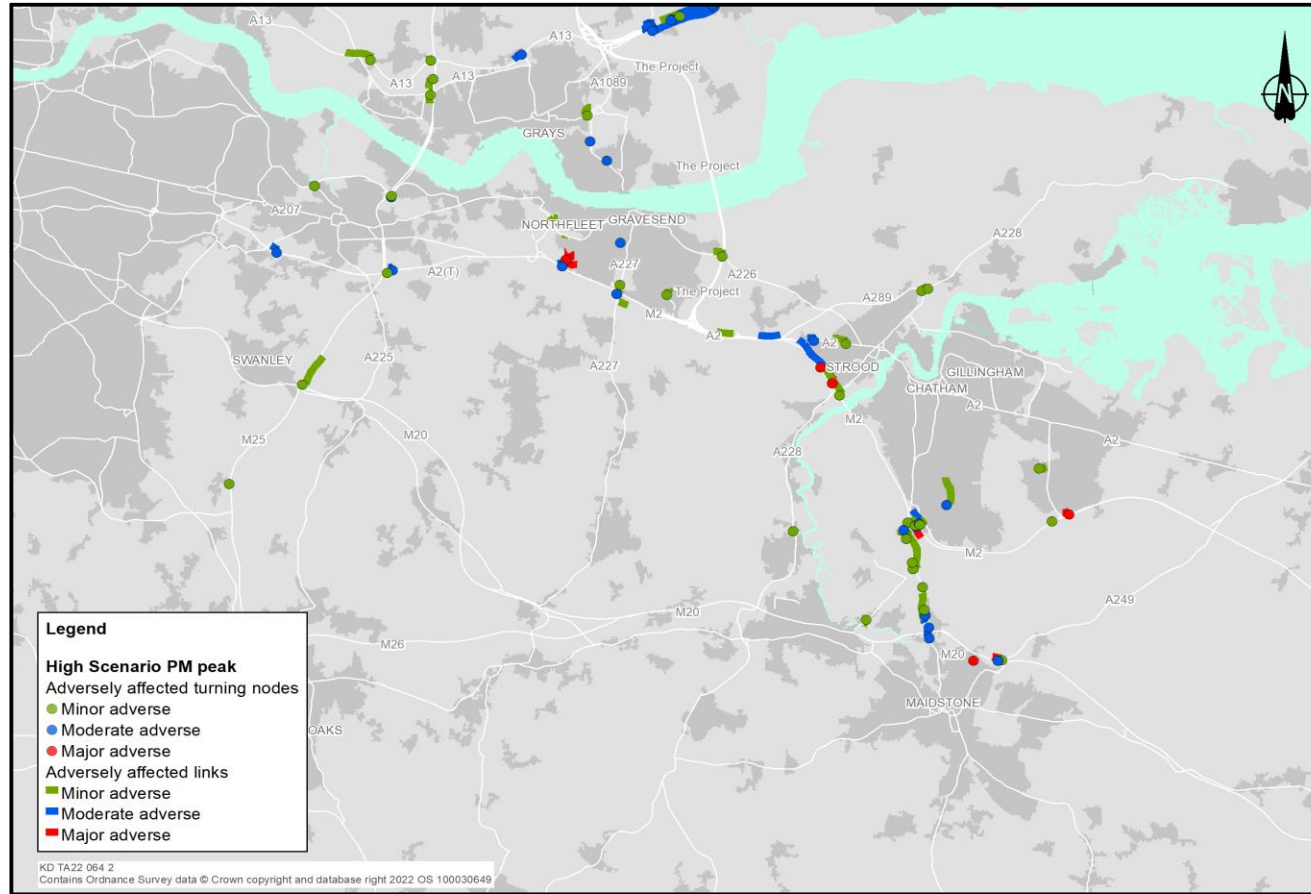


Plate 1.19 Low growth scenario adverse PM peak north



Plate 1.20 Low growth scenario adverse PM peak south



Plate 1.21 High growth scenario beneficial PM peak north

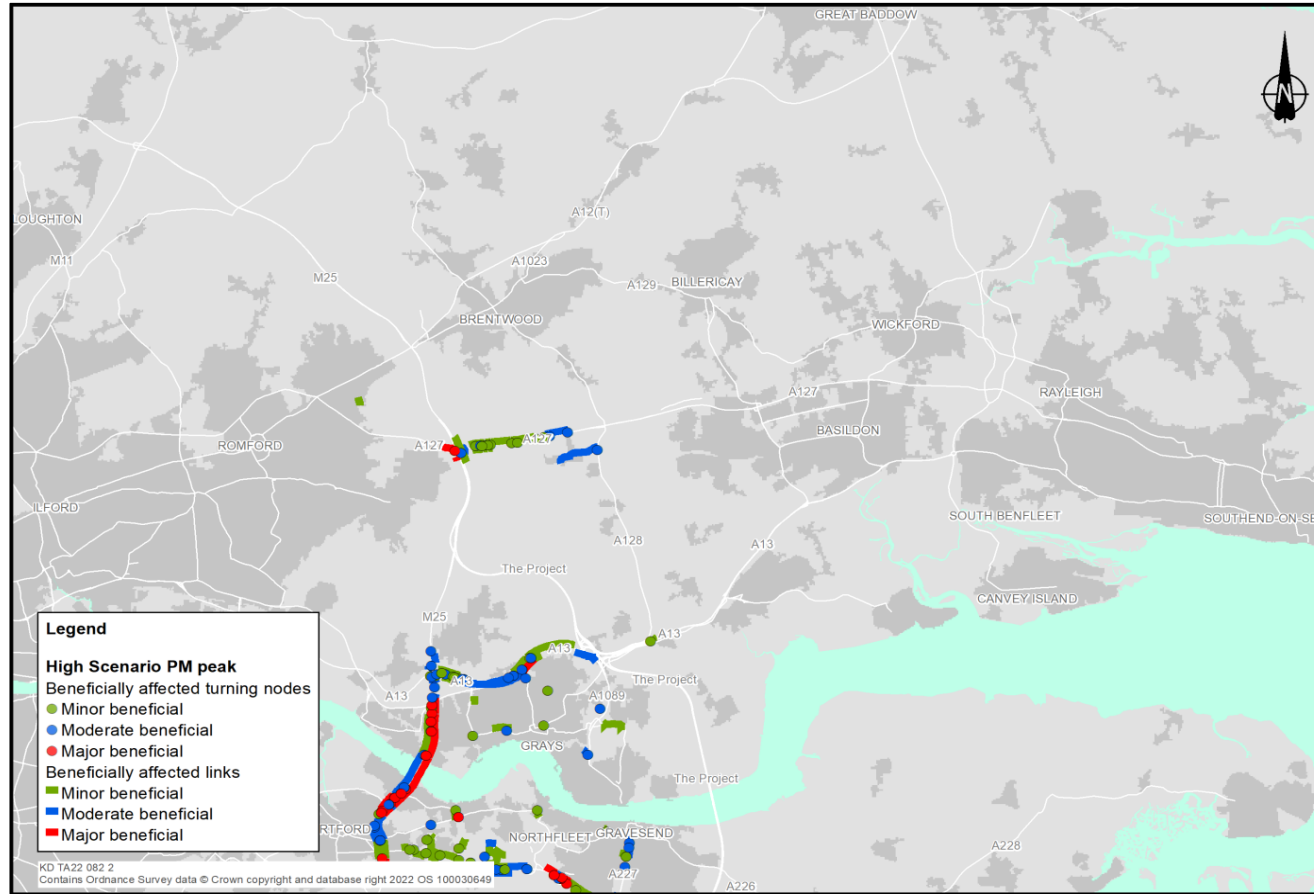
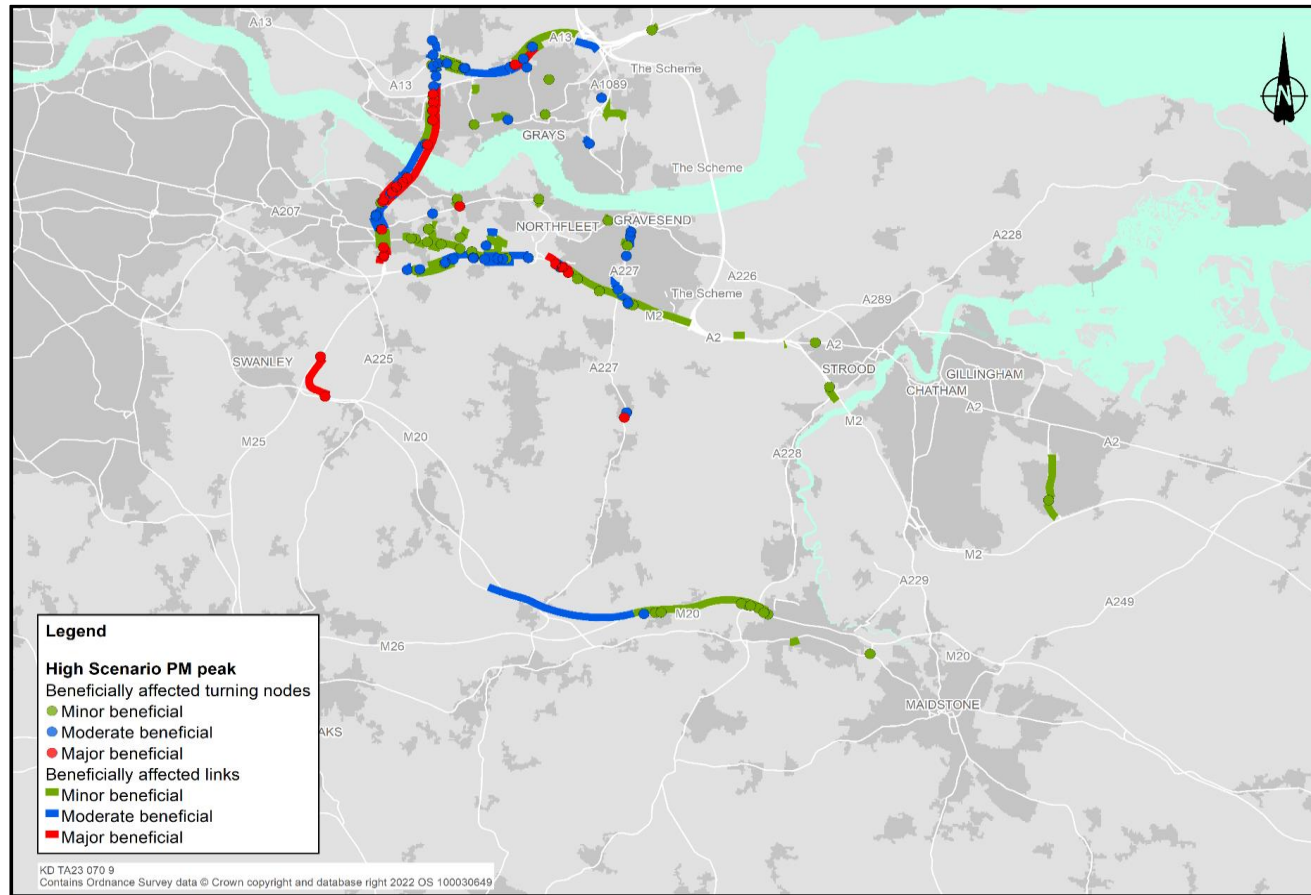


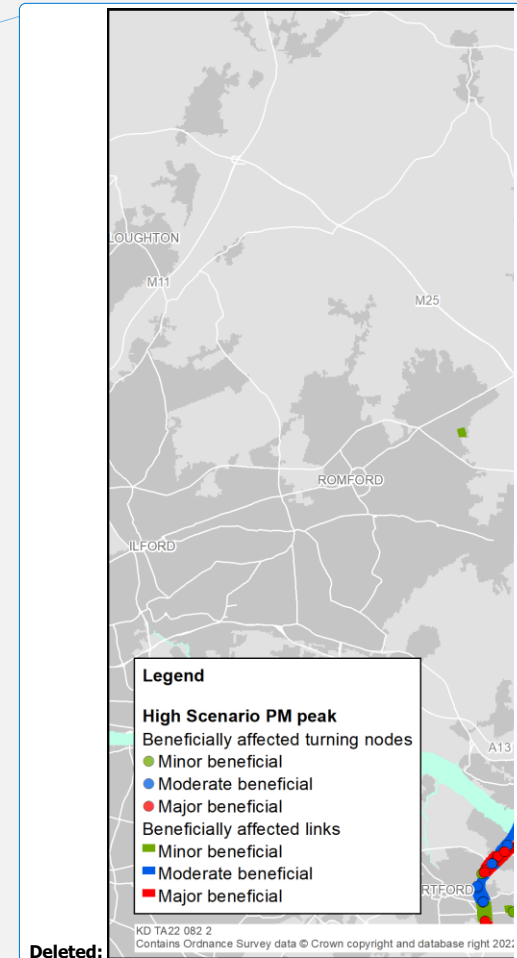
Plate 1.22 High growth scenario beneficial PM peak south



Legend

High Scenario PM peak
 Beneficially affected turning nodes
 ● Minor beneficial
 ● Moderate beneficial
 ● Major beneficial
 Beneficially affected links
 — Minor beneficial
 — Moderate beneficial
 — Major beneficial

KD TA23 070 9
 Contains Ordnance Survey data © Crown copyright and database right 2022 OS 100030649



Legend

High Scenario PM peak
 Beneficially affected turning nodes
 ● Minor beneficial
 ● Moderate beneficial
 ● Major beneficial
 Beneficially affected links
 — Minor beneficial
 — Moderate beneficial
 — Major beneficial

KD TA22 082 2
 Contains Ordnance Survey data © Crown copyright and database right 2022

Plate 1.23 Low growth scenario beneficial PM peak north

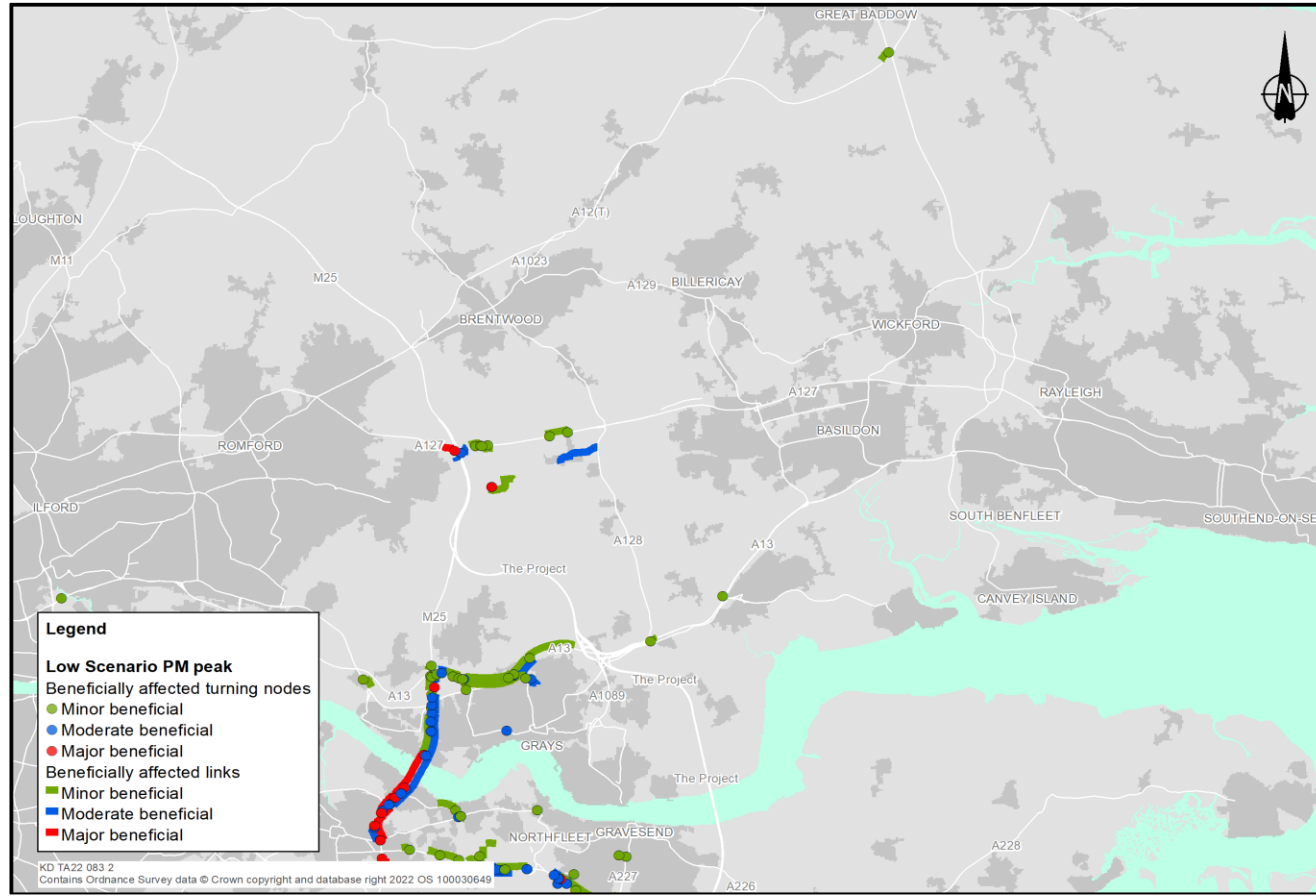
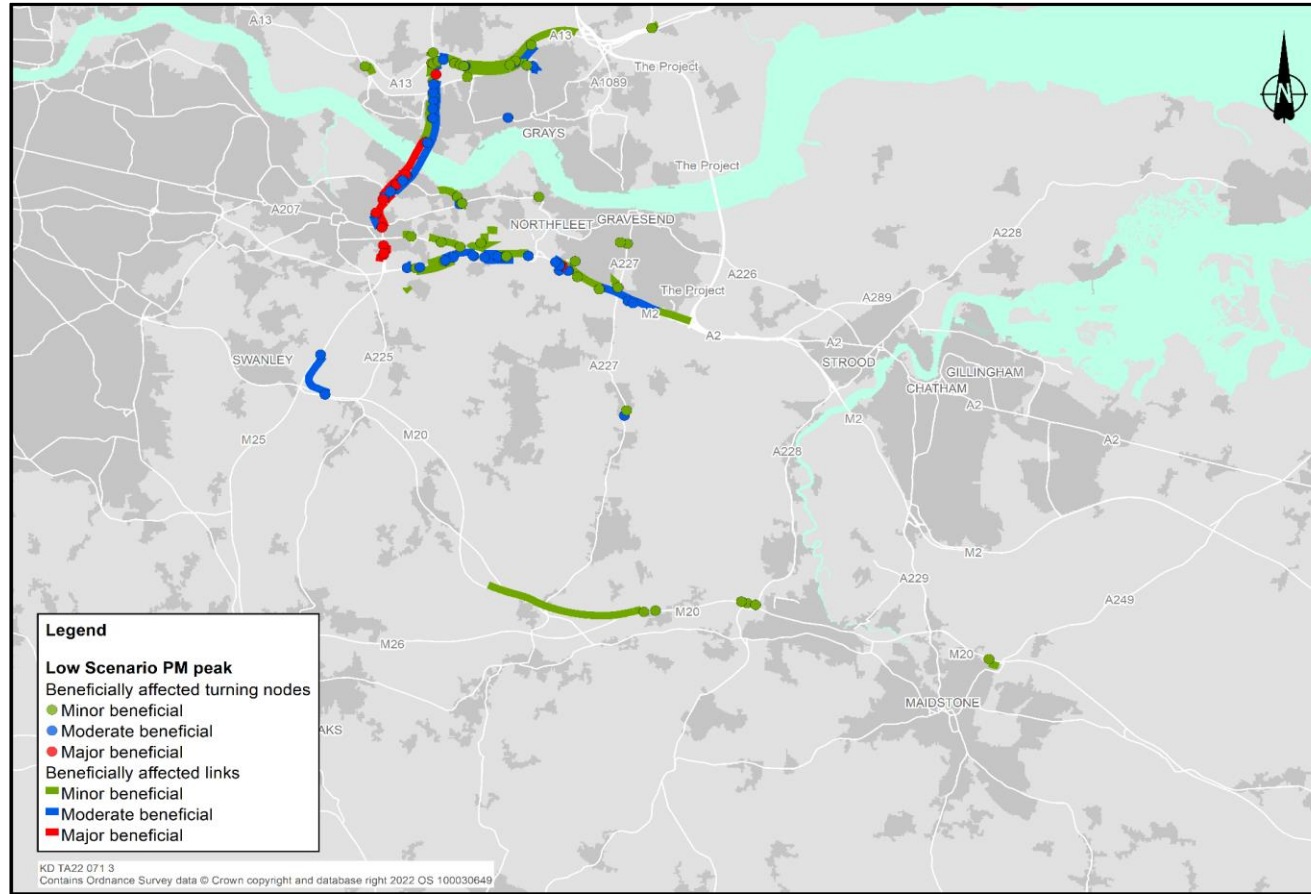


Plate 1.24 Low growth scenario beneficial PM peak south



If you need help accessing this or any other National Highways information, please call **0300 123 5000** and we will help you.

© Crown copyright 2023.

You may re-use this information (not including logos) free of charge in any format or medium, under the terms of the Open Government Licence. To view this licence:

visit www.nationalarchives.gov.uk/doc/open-government-licence/

write to the **Information Policy Team, The National Archives, Kew, London TW9 4DU**, or email psi@nationalarchives.gsi.gov.uk.

Mapping (where present): © Crown copyright and database rights 2023 OS 100030649. You are permitted to use this data solely to enable you to respond to, or interact with, the organisation that provided you with the data. You are not permitted to copy, sub-licence, distribute or sell any of this data to third parties in any form.

If you have any enquiries about this publication email info@nationalhighways.co.uk or call **0300 123 5000**.*

*Calls to 03 numbers cost no more than a national rate call to an 01 or 02 number and must count towards any inclusive minutes in the same way as 01 and 02 calls.

These rules apply to calls from any type of line including mobile, BT, other fixed line or payphone. Calls may be recorded or monitored.

Printed on paper from well-managed forests and other controlled sources when issued directly by National Highways.

Registered office Bridge House, 1 Walnut Tree Close, Guildford GU1 4LZ

National Highways Limited registered in England and Wales number 09346363